

# CabWriter

---

Cabinet Design Software

SKETCHUP-BASED PARAMETRIC DESIGN SOFTWARE FOR  
THE SMALL SHOP

Greg Larson

Joe Zeh

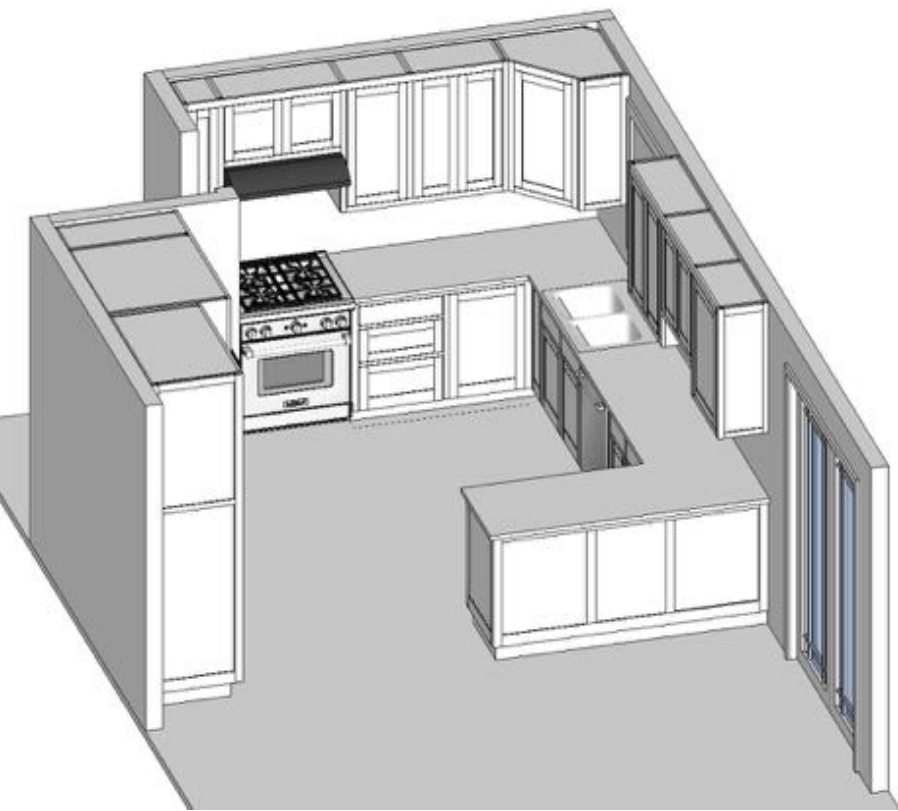
[www.cabwritersoftware.com](http://www.cabwritersoftware.com)

# Features

- SketchUp Based - Powerful 3D Modeling
- Mac or PC
- True Parametric Drawing
- Supports Face Frame, Frameless, and Hybrid Construction
- Automatic Cutlist Generation to Excel (.csv) or Cutlist Plus fx
- Professional Shop Drawings Using SketchUp Pro
- Export DXF's to Your Favorite CAM Software for CNC Machining
- Low Cost - You Own It!

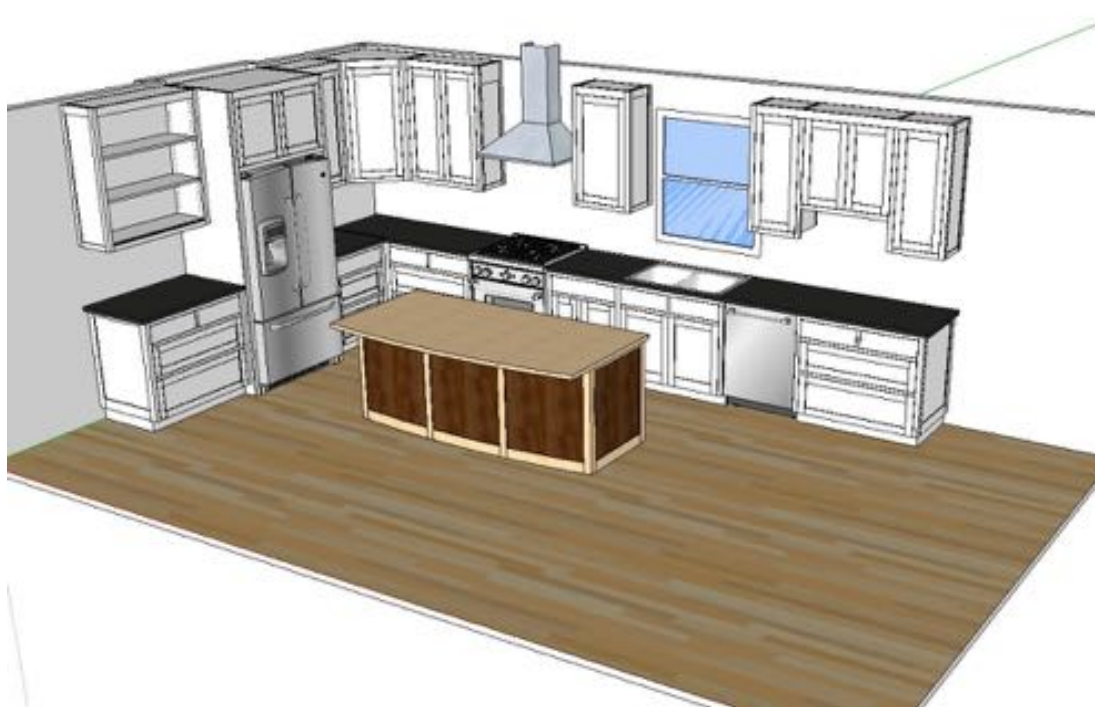
# New England School of Architectural Woodworking (NESAW)

- 5 month (830 hrs.) career training program in cabinetmaking
- Runs early January through mid-June; tuition approx. \$11K plus tools.
- Post secondary; students of all ages (6-11 graduates per year)
- Students come from across the US, but mostly New England and the eastern seaboard.
- Skill training includes:
  - Wood theory
  - Woodworking fundamentals
  - Print reading and cutlisting
  - Cabinetmaking (Students build custom kitchens for customers in the local community)
  - Spray finishing
  - Installation
- [www.nesaw.com](http://www.nesaw.com)

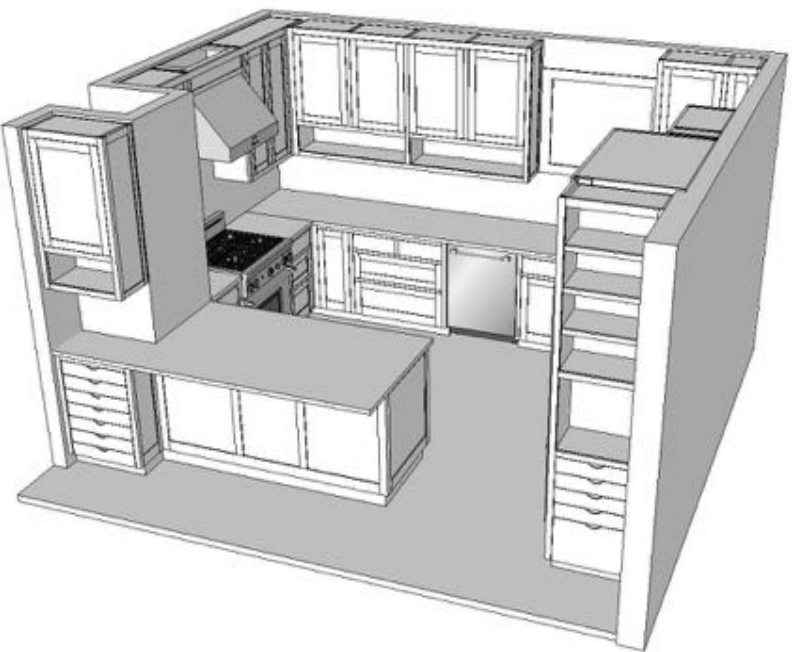


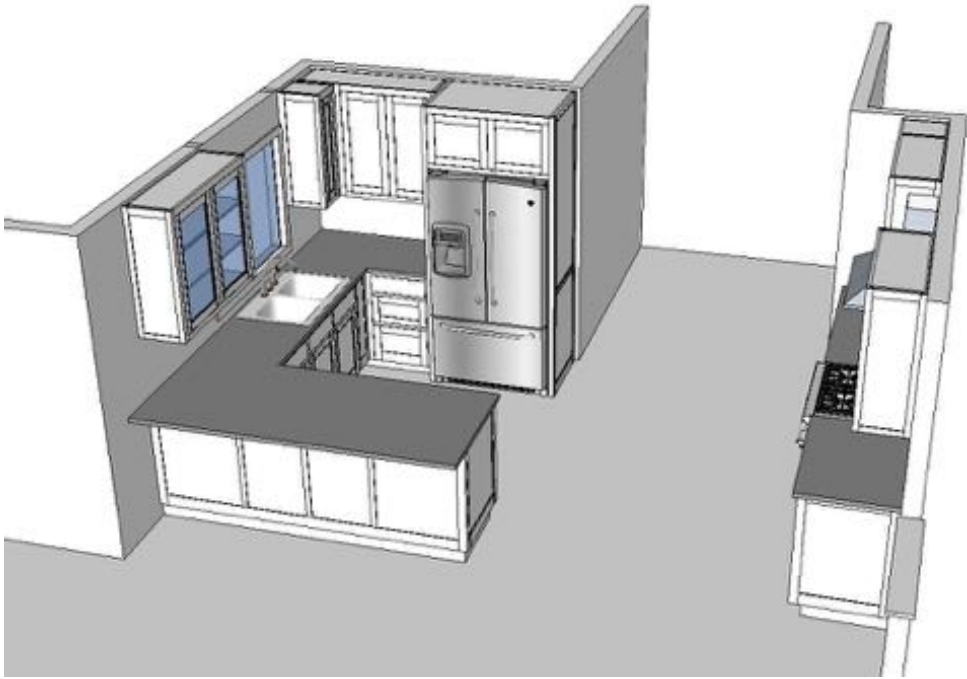




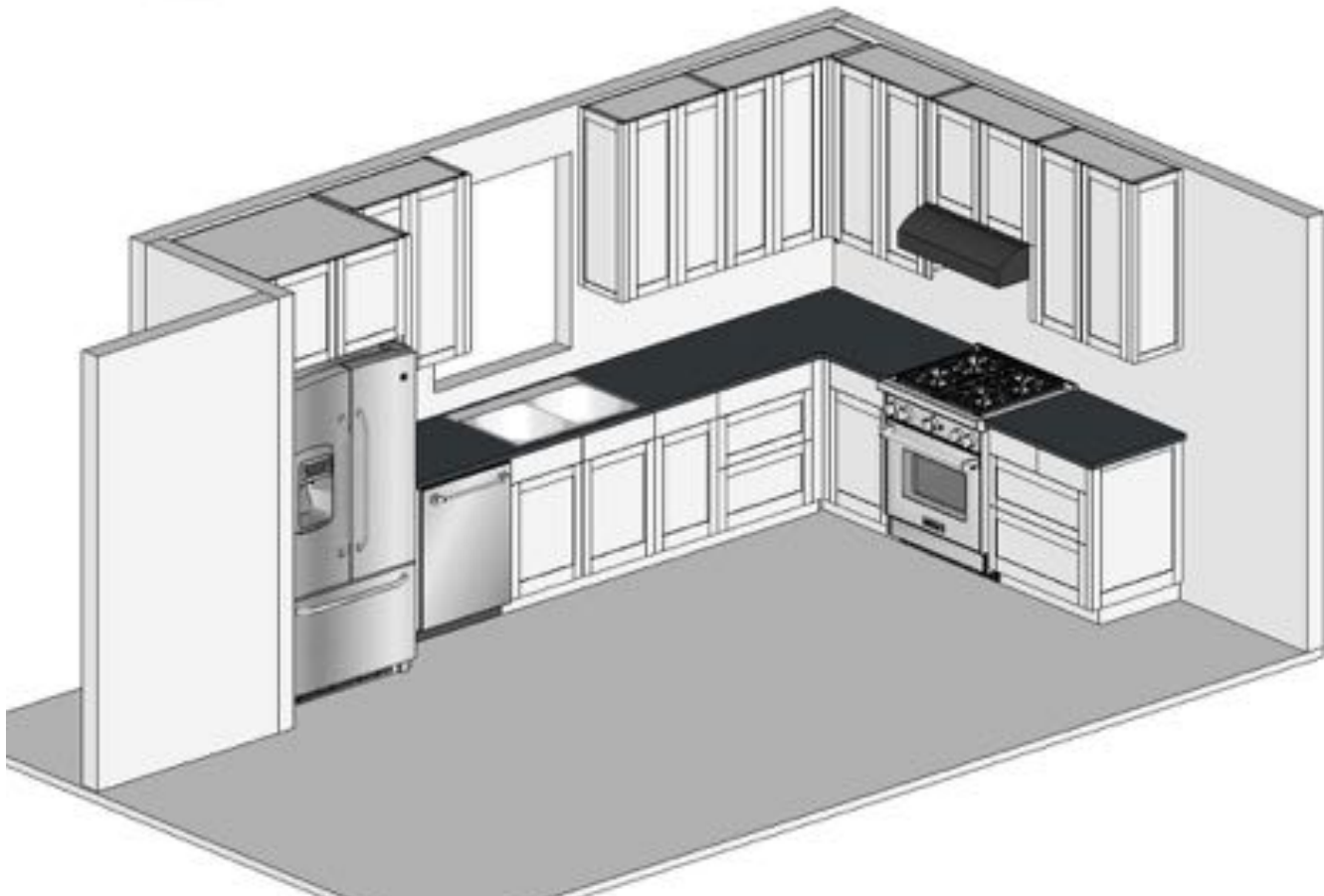
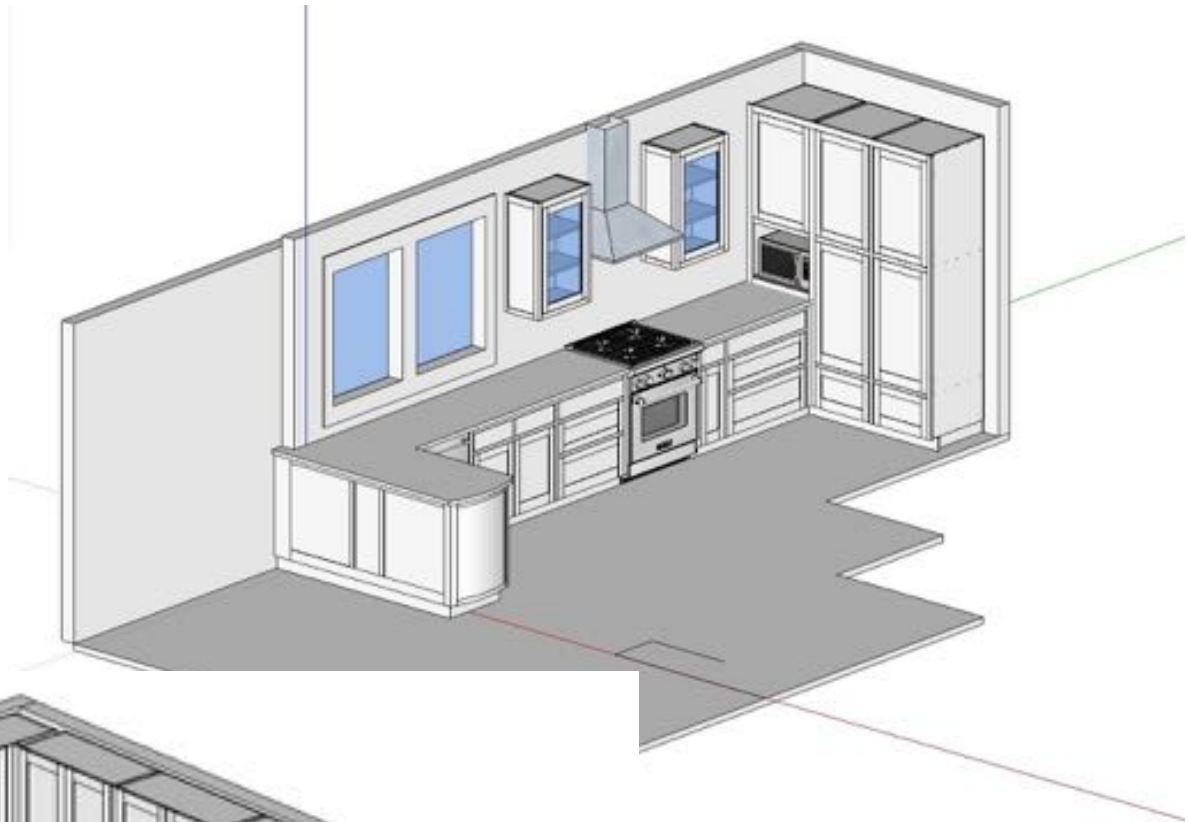


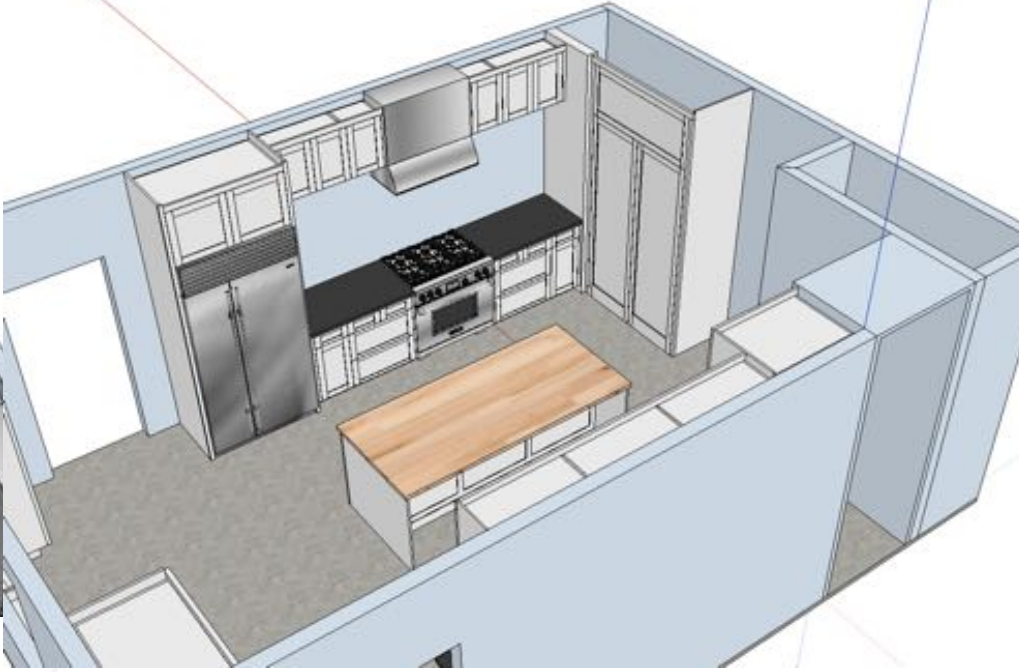
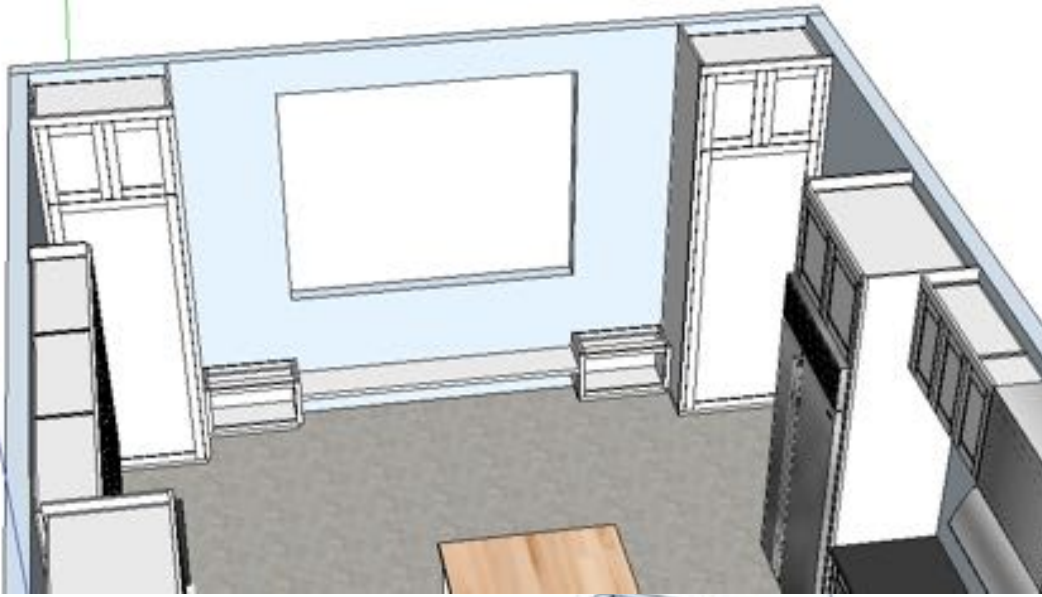












# NESAW/Employer Job Program

- Find a potential employee in your geographic area with the desire to enter the field.
- You agree to pay partial tuition for training at NESAW.
- Employee agrees to pay back all or part of employer contribution if they don't work for an agreed period of time.
- NESAW will offer reduced tuition for qualified applicant.
- You get a trained, qualified, and motivated employee more likely to stay with you longer term.